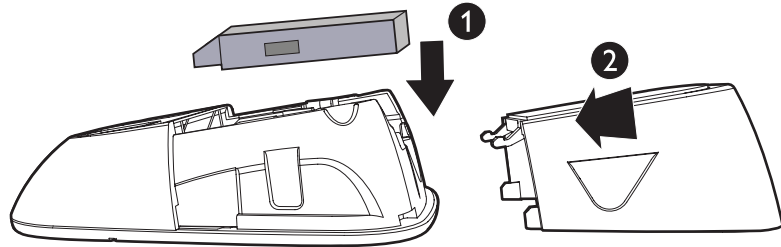


vtech[®]

**VCS754A Wireless Mic
Battery Installation**

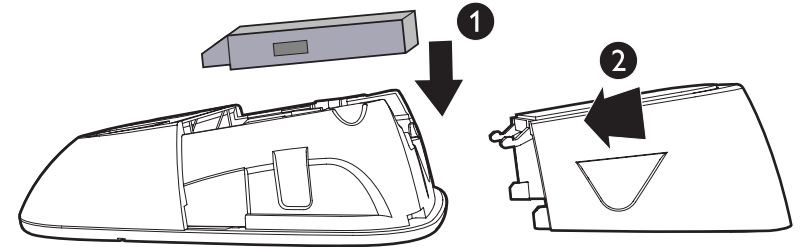


Step 1: Place the battery (with the label **THIS SIDE UP** facing up) into the battery compartment.

Step 2: Slide the battery door until it clicks into place.

vtech[®]

**VCS754A Wireless Mic
Battery Installation**

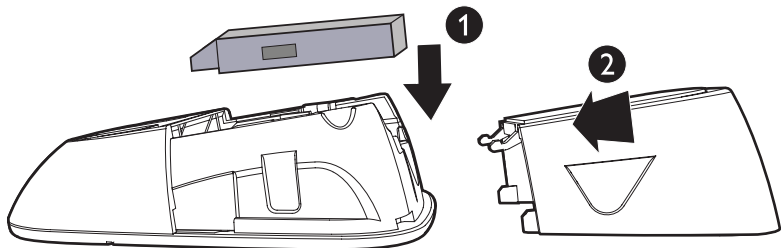


Step 1: Place the battery (with the label **THIS SIDE UP** facing up) into the battery compartment.

Step 2: Slide the battery door until it clicks into place.

vtech[®]

**VCS754A Wireless Mic
Battery Installation**

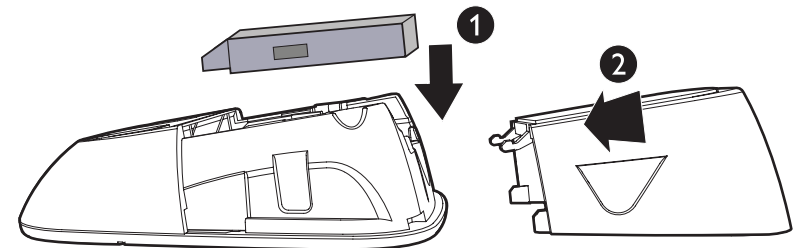


Step 1: Place the battery (with the label **THIS SIDE UP** facing up) into the battery compartment.

Step 2: Slide the battery door until it clicks into place.

vtech[®]

**VCS754A Wireless Mic
Battery Installation**



Step 1: Place the battery (with the label **THIS SIDE UP** facing up) into the battery compartment.

Step 2: Slide the battery door until it clicks into place.